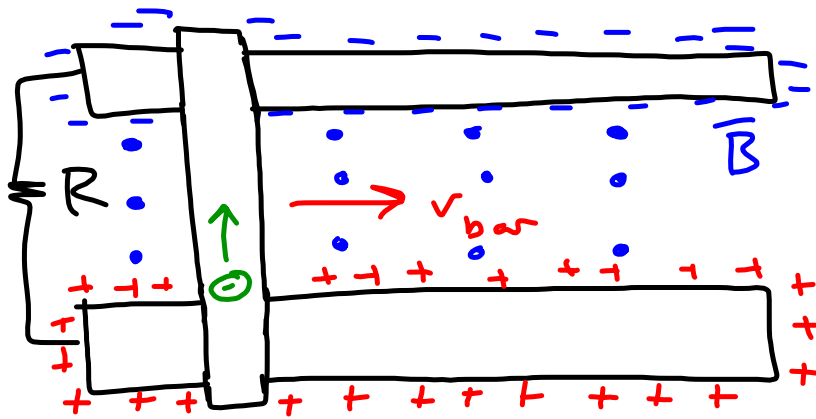


MOTIONAL Emf

- Magnetic field exerts a force on current-carrying wire.
- Moving a wire in a magnetic field induces a current in the wire.

THIS IS AN INCREDIBLY IMPORTANT STATEMENT!!!



$\mathcal{E}_{\text{mf}} = \Sigma = \text{electric potential}$

$$\Sigma = IR$$