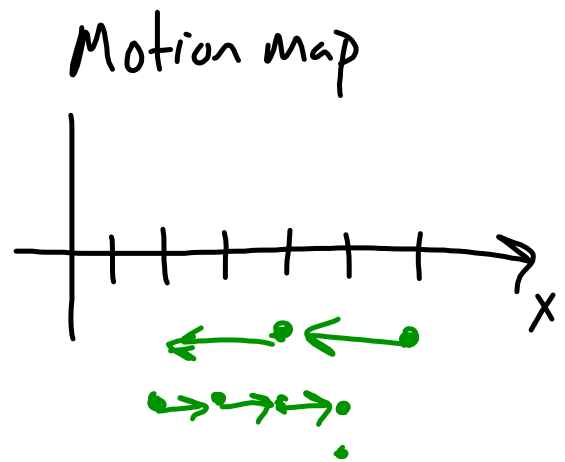
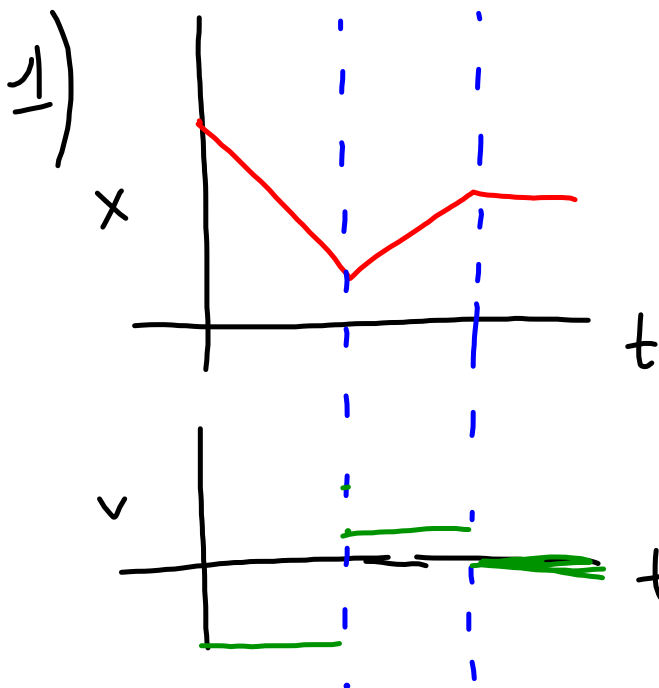
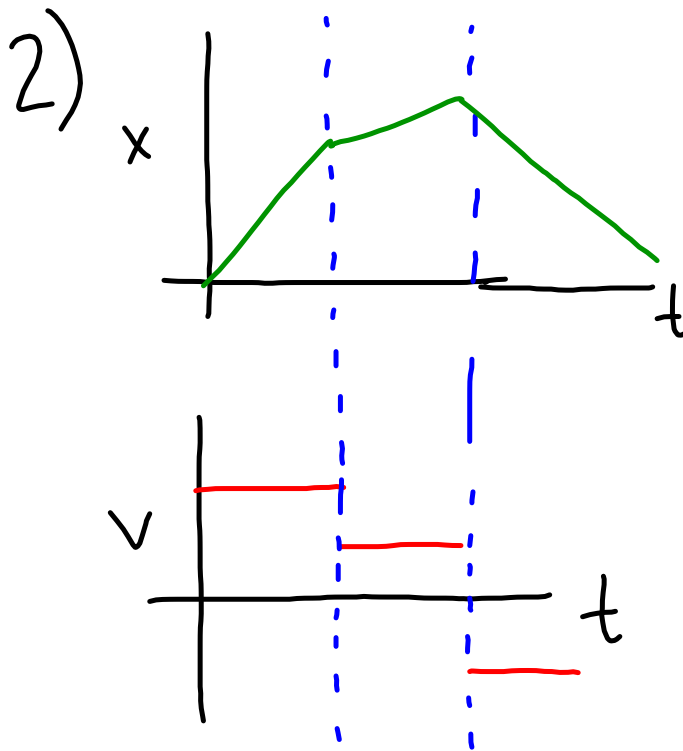


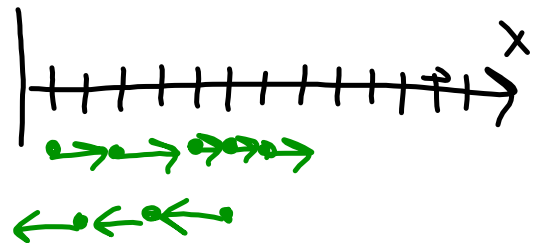
QUIZ REVIEW - CONSTANT VELOCITY



Written description:

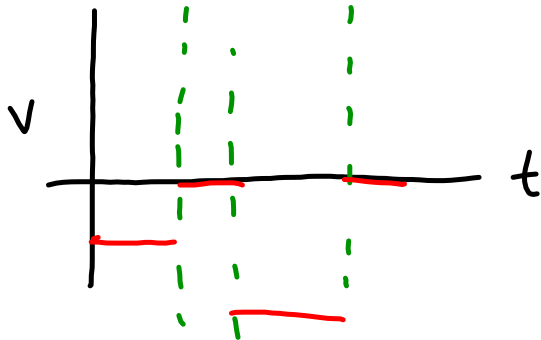
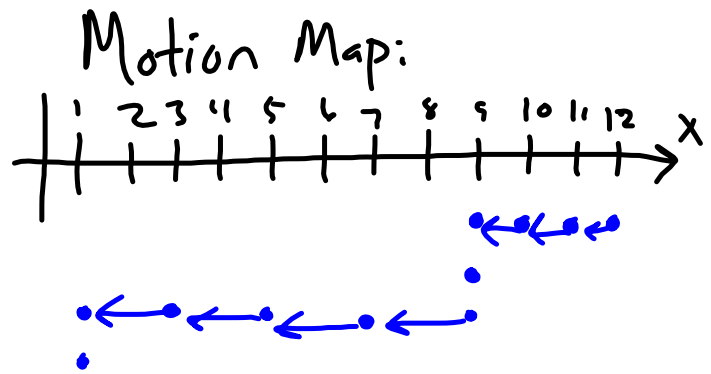
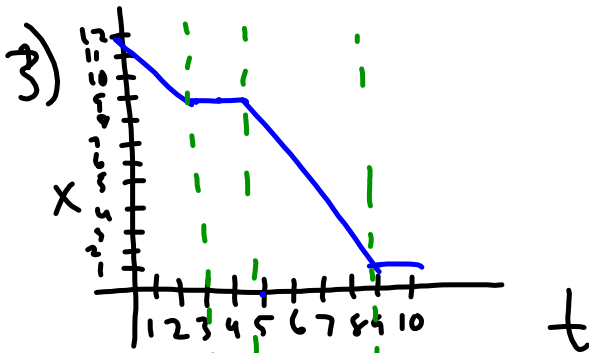


Motion Map:



Written description:

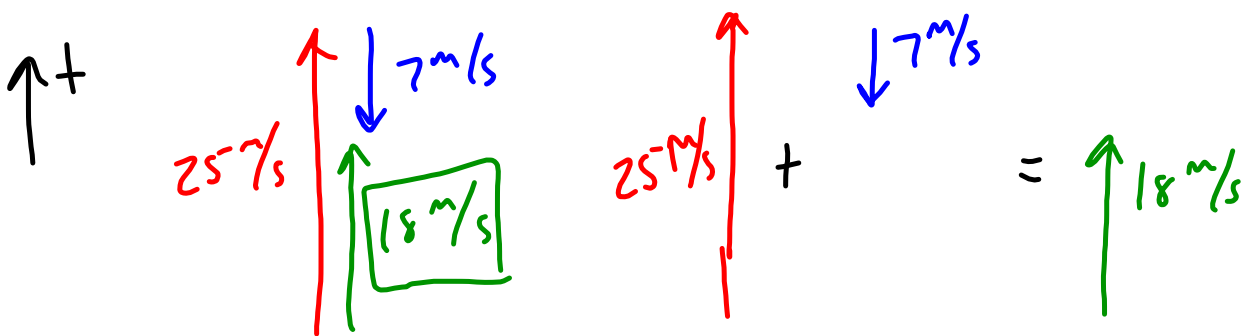
- forward fast
- forward slow
- backward fast



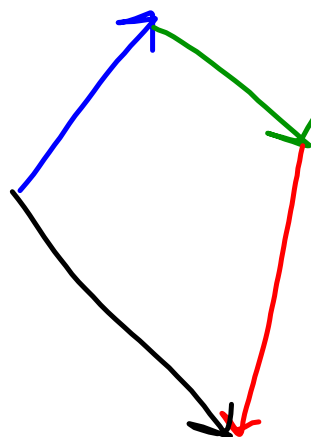
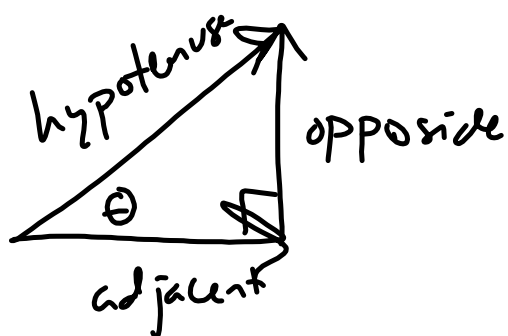
Written description:

- backward slow
- stopped
- backward fast
- stopped

A bird is flying north with a velocity of 25 m/s and experiences a wind to the south (headwind) with a velocity of 7 m/s. What is the net velocity with which the bird travels?



$$25\text{ m/s} - 7\text{ m/s} = +18\text{ m/s}$$



A bug walks a displacement of 20 cm east, 35 cm west, and 7 cm east. What is the net displacement of the bug?

→ +

$$20 \text{ cm} - 35 \text{ cm} + 7 \text{ cm} = -8 \text{ cm}$$

